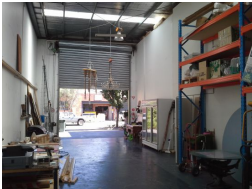
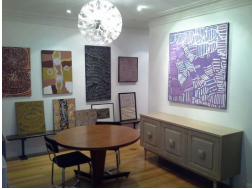


"LIVE & WORK IN BRUNSWICK"



"LIVE & WORK IN BRUNSWICK"

This rare opportunity to purchase a unique Office Showroom Warehouse also comprises a unique Caretakers Unit. Located in sought after and tightly held location and close to Lygon Street Village, Public Transport, CBD and Brunswick's Funky Eateries.

- * Total Building Area 570m2 approx.
- * Land Area 409m2 approx.
- * On site Caretakers Unit with secure parking.
- * Independent access to upstairs dwelling - can separate!
- * Work, Live, or Invest, Endless Possibilities!

INSPECTION BY APPOINTMENT ONLY!

property Features

Property ID	7892493
Area	570 m2 approx.
Commercial	sold
Commercial Category	Office, Showroom, Warehouse
Commercial Listing Type	sale
Address	28-30 Gale Street Brunswick East 3057 Victoria, Australia
Air Conditioning	true
Alarm System	false
Zone	Business 3
Area Land	409 m2 approx.
New Construction	false
Rent Per Square Metre Range	-
Tax	unknown
Tenancy	unknown